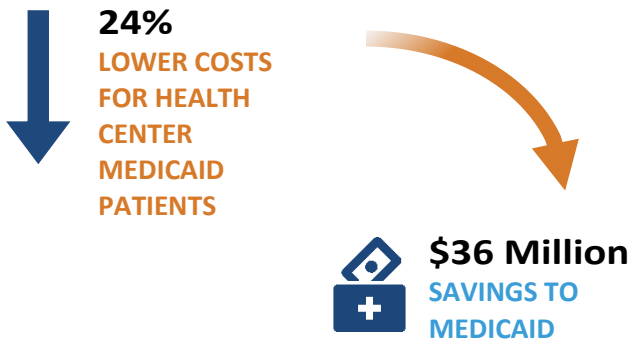


The Value and Impact of Shenandoah Community Health

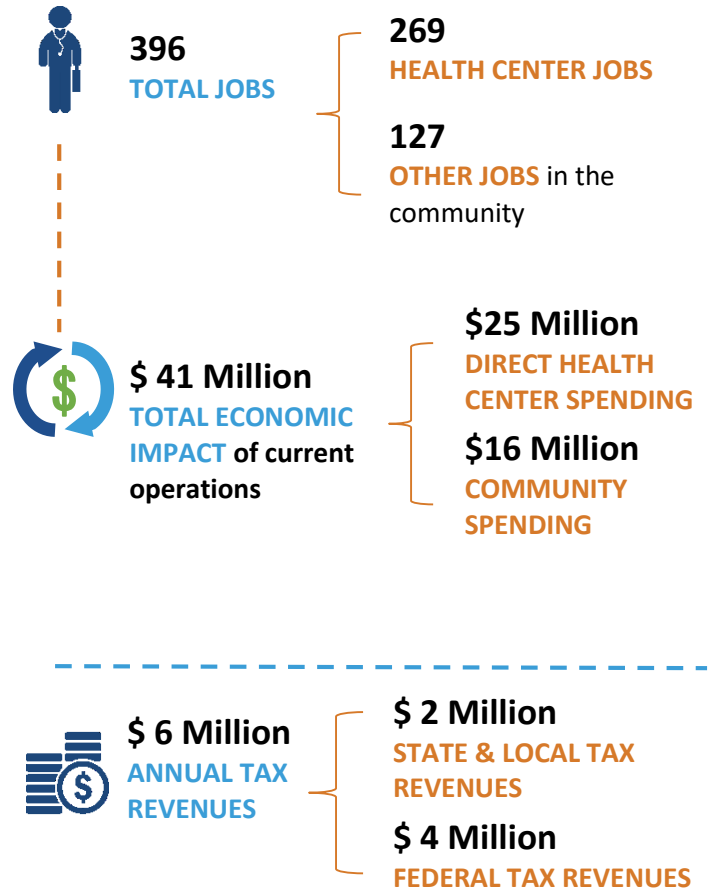
Health centers provide tremendous value and impact to the communities they serve, including **JOBS** and **ECONOMIC STIMULUS**, **SAVINGS** to Medicaid, and **ACCESS** to care for vulnerable populations.

This report highlights **Shenandoah Community Health's 2017 contributions and savings.**

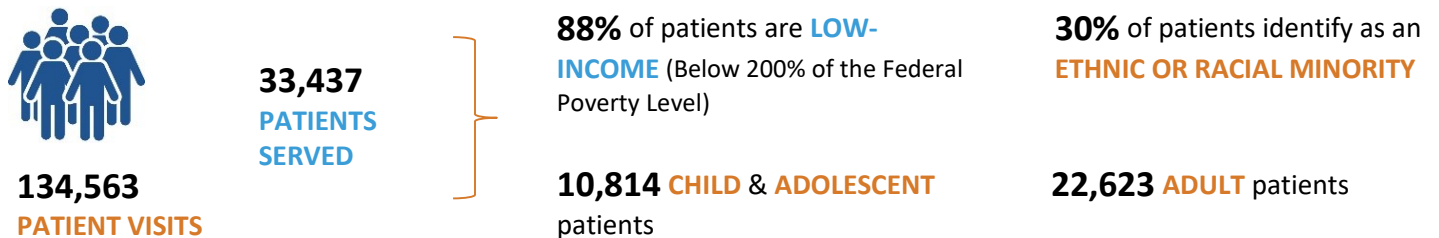
SAVINGS TO MEDICAID



ECONOMIC STIMULUS



ACCESS TO QUALITY CARE



Capital Link prepared this Value & Impact report using 2017 health center audited financial statements and Uniform Data System information. Economic impact was measured using 2017 IMPLAN Online.

REFERENCES AND DATA SOURCES

- Economic Stimulus: Calculated by Capital Link using 2017 IMPLAN Online. Learn more at www.caplink.org/how-economic-impact-is-measured.
- Savings to Medicaid: *Health Care Use and Spending for Medicaid Enrollees in Federally Qualified Health Centers Versus Other Primary Care Settings*. American Journal of Public Health: November 2016, Vol. 106, No. 11, pp. 1981-1989.
- Access to Quality Care: Bureau of Primary Health Care, HRSA, DHHS, 2017 Uniform Data System.
- Full-Time Equivalent (FTE) of 1.0 is equivalent to one full-time employee. In an organization that has a 40-hour work week, an employee who works 20 hours per week (i.e., 50 percent of full time) is reported as “0.5 FTE.” FTE is also based on the number of months the employee works. An employee who works full time for four months out of the year would be reported as “0.33 FTE” (4 months/12 months).

SUMMARY OF 2017 ECONOMIC STIMULUS

		Economic	Employment
Community Impact	Direct	\$ 24,538,649	269
	Indirect	\$ 5,407,321	40
	Induced	\$ 10,800,875	87
	Total	\$ 40,746,845	396

SUMMARY OF 2017 TAX REVENUE

		Federal	State
Community Impact	Direct	\$ 3,047,045	\$ 643,463
	Indirect	\$ 405,607	\$ 291,273
	Induced	\$ 780,002	\$ 727,740
	Total	\$ 4,232,654	\$ 1,662,476
Total Tax Impact		\$ 5,895,130	

About Capital Link

Capital Link is a non-profit organization that has worked with hundreds of health centers and primary care associations for over 20 years to plan for sustainability and growth, access capital, improve and optimize operations and financial management, and articulate value. We provide an extensive range of services, customized according to need, with the goal of strengthening health centers—financially and operationally—in a rapidly changing marketplace. Capital Link maintains a database of almost 10,000 health center audited financial statements from 2005 to 2017, incorporating approximately 75% of all health centers nationally in any given year. This proprietary database is the only one of its kind as it exclusively contains health center information and enables us to provide information and insights tailored to the industry. For more information, visit us at www.caplink.org.